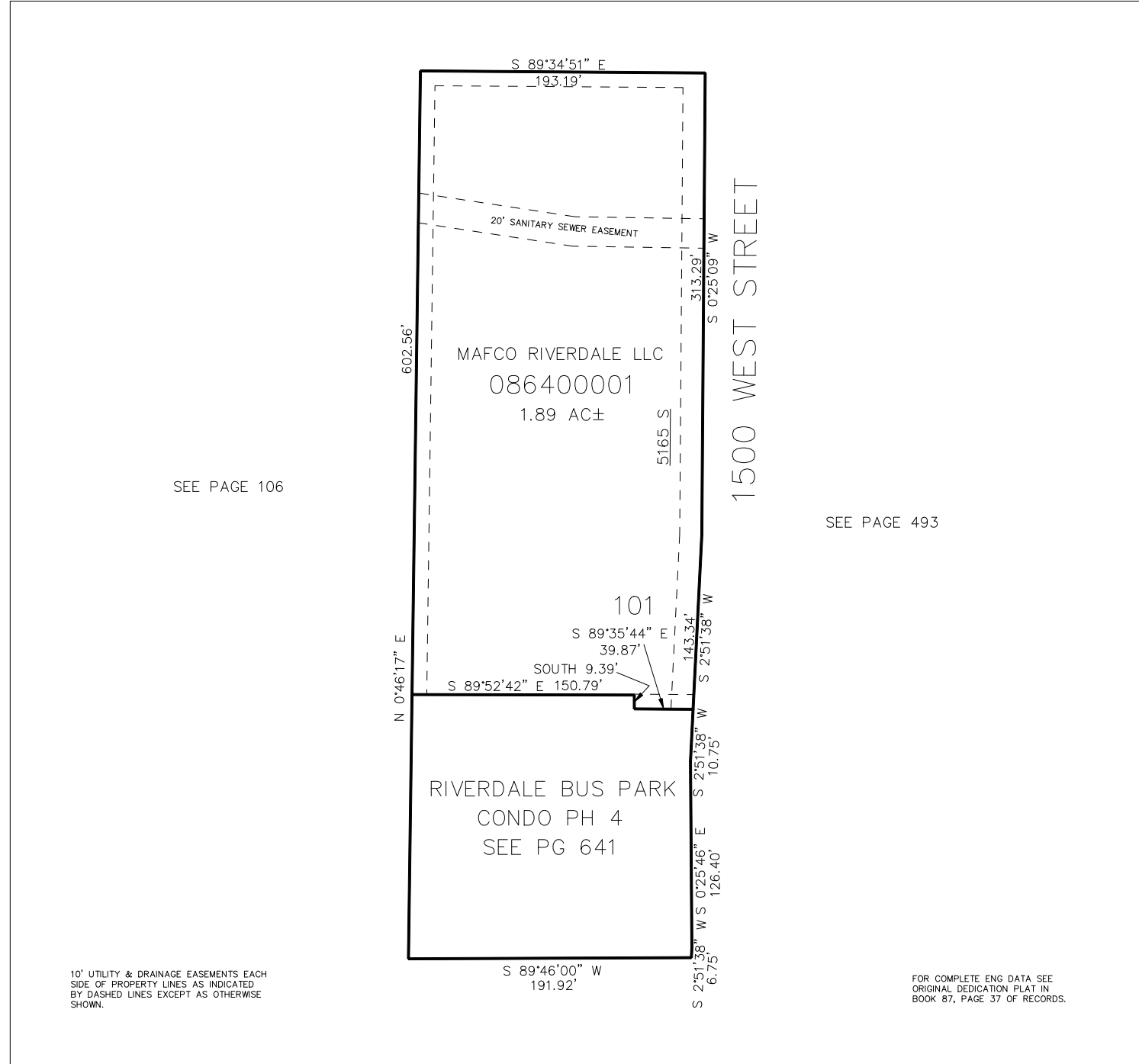


PART OF THE NE.1/4, OF SECTION 13, T.5N., R.2W., S.L.B. & M.  
**HAYWARD BUSINESS PARK SUBDIVISION 1ST AMENDMENT**

IN RIVERDALE CITY  
SCALE 1" = 50'

TAXING UNIT: 419



SEE PAGE 106

SEE PAGE 493

10' UTILITY & DRAINAGE EASEMENTS EACH  
SIDE OF PROPERTY LINES AS INDICATED  
BY DASHED LINES EXCEPT AS OTHERWISE  
SHOWN.

FOR COMPLETE ENG DATA SEE  
ORIGINAL DEDICATION PLAT IN  
BOOK 87, PAGE 37 OF RECORDS.